

# THE LM'AH

*Lyman-Morse's Quarterly Internal Newsletter*



## From the Editor

Welcome to LM's first employee newsletter! We are starting this to help keep everyone more informed about the various exciting projects going on at LM as we grow. It will highlight major happenings around the company, help you get to know your coworkers and keep us all better connected and informed.

Q1 of 2022 was a heavy hitter across the company. Winter always brings a period of heavy work to LM, and with the manpower shortage this winter was no different. We have been recruiting heavily, attending job fairs, implementing the referral bonus program, and generally doing all we can to retain current employees and recruit new ones. We also implemented the overtime bonus program to thank everyone for putting in the time needed to get the job done. Let us know if you think of other ideas/ways we can make LM a better place to work!

*Matt Graham*  
*COO, Editor in Chief*

### IN THIS ISSUE

---

**FROM THE EDITOR**

---

**UPCOMING EVENTS &  
WHOSE THAT LM'AH?**

---

**HINDSIGHT: A  
QUARTERLY REVIEW  
BONUS: AN INSIDE LOOK  
AT THE CAMDEN  
CONSTRUCTION**

---

# Employee Highlight: Whose that LM'Ah?



One of our favorite co-workers appears in this photo of the 1966 Martinsville Junior Grange. Can you figure out who it was?

Hint: She's by far the most stylish one in the photo, a trend that continues to this day.

Answer in the next edition

## Upcoming Events

**Hood 35 and LM46 Launch** - April 1 at 2 pm the second LM46 "Arcadia" will be launched. We will have a companywide launch party with food and drinks for employees (sorry no families this time around).

**Hood 35** - The first Hood 35 powerboat will launch in mid-May, final date and details of the launch TBD.

**Spring Cornhole Tournament** - June - We will be holding an interdivisional cornhole tournament in June using a March Madness-Style bracket. Details to follow.

**Camden Development "Launch" Party** - This summer we will be opening the Camden development described at the end of this newsletter to the public. Prior to that we will have a companywide party on the site to show people around and celebrate this company milestone. Details to follow.

**Newport-Bermuda Race LM Trophy** - On June 17th, 2022 three LM-built boats and five boats with LM connections will start the 52nd Newport-Bermuda Race. This 635 mile offshore sailing race is held biannually and is considered one of the top ocean races in the world. This years race will feature LM46 #1 "Hopgrasser" skippered by Drew Lyman; LM46 #2 "Arcadia" skippered by Eliot Merrill; Kiva, a Hinckley Sou'wester 51 skippered by Mark Stevens; "Windwalker" an LM-built Hood 60 out of Gibson Island, MD; and Sydney 47 "Polaris" also out of Gibson Island with Matt Graham working the glamorous position of foredeck. You can follow the race on the YB Races app, and watch the two LM46s battle it out while Polaris builds her lead over both of them.

**Kickball Season** - July - In the month of July we will be competing in the Thomaston Rec Department's co-ed adult kickball league again. We will have exact dates and details as soon as the town releases more information. This was a blast last year and significant others and kids are encouraged to join the LM teams.



# Hindsight: A Quarterly Review Society & General Interest

This quarter was an active one for LM employees both inside and outside the shop. Below is a summary of the highlights;

- **Annual Ice Fishing Derby** - The annual ice fishing derby was marked by the gorgeous weather that ice fishing derbies are generally known for. Turnout was around 80 and the prize money flowed along with the libations and good cheer.
- **Toboggan National Championships (the "Nationals")** - This was a huge year for LM at the Nationals. To begin with, Camden finally put together two teams, one of which, the Clam Chuters' put up a good fight for fastest all female team and made the Portland Press Herald. Tragically, LM also lost a longtime friend at the Nationals when former national champion sled "Instigator" built by Jeremy Proctor self destructed on the rocks on the far side of Hosmer Pond. To add insult to injury, our archrivals Whiskey on Ice swept the event. We have already allocated funds to build new sleds for 2023, so get ready!
- **St. Patty's Day Templeton Toss** - For those of you who don't work in Thomaston, or who have joined the company in the last 24 months, you may not be familiar with this odd tradition. Five years ago the Thomaston Service Yard started throwing quarters at a rodent hole in the wall in a corner of building 1. Since then a complex series of rules has grown as quickly as attendance.





# Projects - Boatbuilding

- Hood 35 Hull #1 is a Chris Hood-Lyman-Morse collaboration build for a very tech savvy client. The boat is being set up to be fully autonomous at some point in the future! On the right, Spencer Baldwin drops in one of the engines and the hull gets pulled off the strong back.



- LM46 Hull #2 "Arcadia" is being built for longtime LM client Eliot Merrill. Unlike Hopgrasser, which was hull #1 and featured a 6' shoal draft keel, Arcadia will have a 7'7" performance keel. Both LM46s will be racing in the Newport-Bermuda Race.



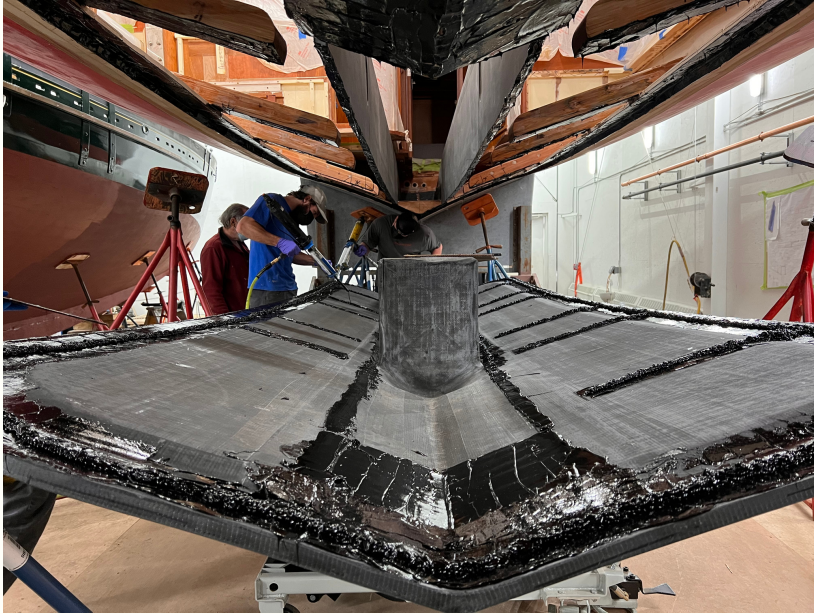
- LM is infusing its first Navier 27 foiling electric boat. LM has been contracted to build two hulls for Navier. One is for the boatshow circuit and the other is to test the company's foiling technology. This is a collaboration project between LM Technologies and Boatbuilding.





# Projects - Camden Ops

- Zemphira, a 76' Brooklin Boatyard-built, Stephens Waring-designed Spirit of Tradition sloop is in for the second year of its refit. The team has pulled its existing keel off and installed a keel socket for interchangeable racing keels. Below is a sequence of photos of the keel work.



- Agneta, an 82 foot plank on frame mahogany yawl built in 1951 in Sweden is in Camden to get her hull repaired. This has been a great carpentry job for the team.





# Projects - Thomaston Service

- Reimagine, an LM built 95' power yacht is getting repainted as part of year two of her refit



- Bishberry, an LM-built Monhegan 30 built in 1997 as "Rainmaker" is finishing up a refit in building 5.



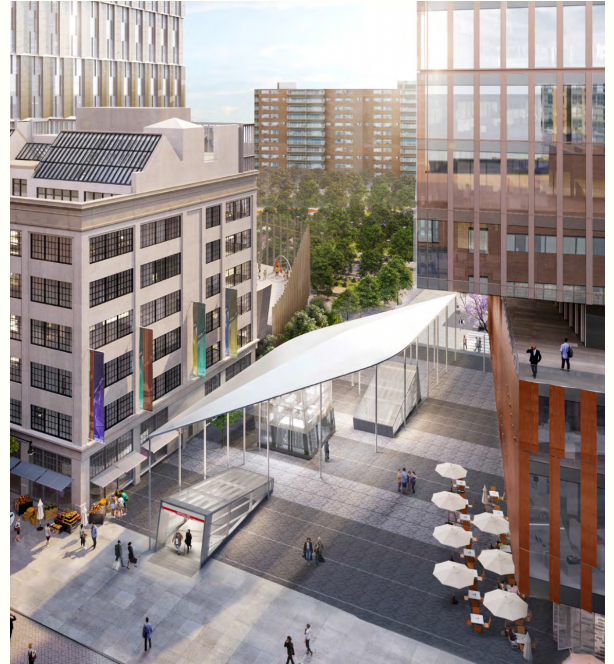
- Hound, a 60 foot Abeking & Rasmussen-built Sparkman & Stephens designed classic yacht has been in and out of Lyman-Morse for years. She will be launched in April and will be competing in the Newport-Bermuda Race.



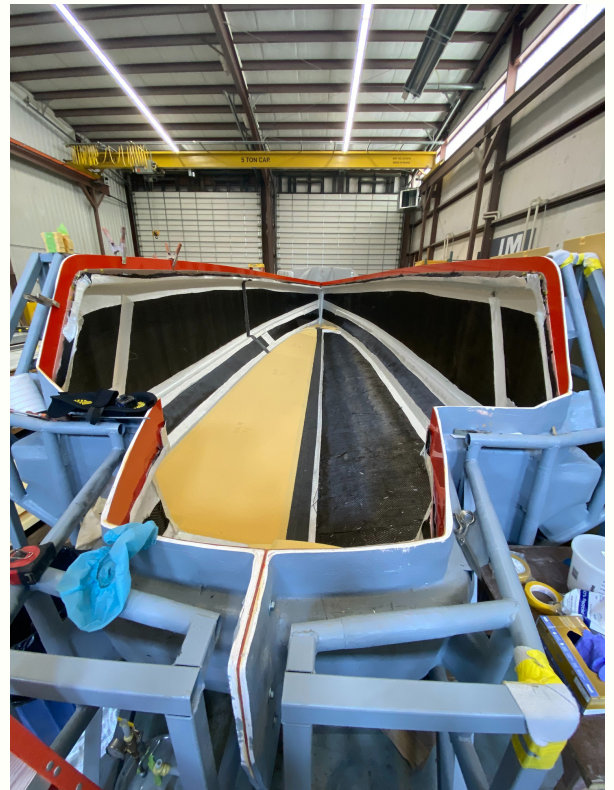


# Projects - Technologies

- The LM Technologies Division, which encompasses Composites and CNC, received its ISO 9001 certification the last week of March, which is a huge operational step for the division. As you may know, ISO 9001 is one of the highest quality management certifications available and will allow this division to pursue increasingly demanding work.
- Technologies is laying up the second half of the Kendall Square canopy, a 145 foot architectural canopy that will go over the Kendall Square/MIT subway stop in Boston.



- Technologies is also playing a key role in the Navier 27 construction (photo below right) and the Zemphira keel job (photo below left). Both of these jobs have allowed the team to show off their carbon skills.





# Fabrication

- LMF just moved into their new offices. While some construction details are still ongoing this is a huge improvement for the growing fabrication team.



- To the right is a photo of the fabrication shop floor. Currently the shop is finishing off two aluminum workboats, and just got contracts for two more. Additionally the team is building more fish pens for aquaculture client Innovasea and pursuing a variety of other jobs, including supporting the Camden development.





# BONUS: An Inside Look at The Camden Construction

As many of you know, in the wake of a fire in the Rhumb Line restaurant in Camden in 2019 we decided to accelerate our improvement plans for Lyman-Morse's Camden inner harbor boatyard and build out 33,000 square feet of new workshops, offices and rental spaces right along Camden Harbor. This has been a landmark project for Lyman-Morse, and integrates our operations with the Camden waterfront community. When completed this spring, the Camden facility will be a fitting showcase for the craftsmanship and dedication of the men and women who maintain Lyman-Morse's reputation for world-class marine service and boatbuilding. Currently the project will house the Camden carpentry, mechanical, canvas, electronics and rig shop, the parts room, the service yard office, and some of our corporate offices. Additionally, there will be a number of spaces available for lease to the public. Currently, spaces have been leased by Salt Wharf Restaurant; the Blue Barren Distillery, to be known as Barren's Restaurant; and some small office spaces that will be rented by various local businesspeople, and some residential quarters for crews to use. There are also a number of beautiful commercial and retail spaces facing the water that are still available for rent.

Pulling off a project of this magnitude and complexity, especially with the tight timelines we have, requires a high level of project management. In the case of the Camden development the person behind the project is Josh Moore, Lyman-Morse's Director of Special Projects. Many of you don't know Josh, as his job description ranges from identifying grants that Lyman-Morse can apply to, to doing the pre-planning on various projects the company has in process, to photographing company events and helping out in marketing. However, Josh has really risen to the occasion with the Camden project. He has handled all of the coordination between the architects, engineers, construction company and tenants, managed the budgets and timelines quite successfully, and is on track to finish out a great project and move on to the next one. Below are some photos Josh has taken of the project. Next time you see him around, grab him and congratulate him on a great project.



- To the right, the state of the construction in early March. You can see the buildings ready for sheathing.



- To the left, the new rig shop where LM celebrated our annual Christmas party. Below is an artists rendering of the new restaurant.

